

Country responses to TAP assessment and CFP's questions

Zambézia Integrated Landscape Management Program (ZILMP)

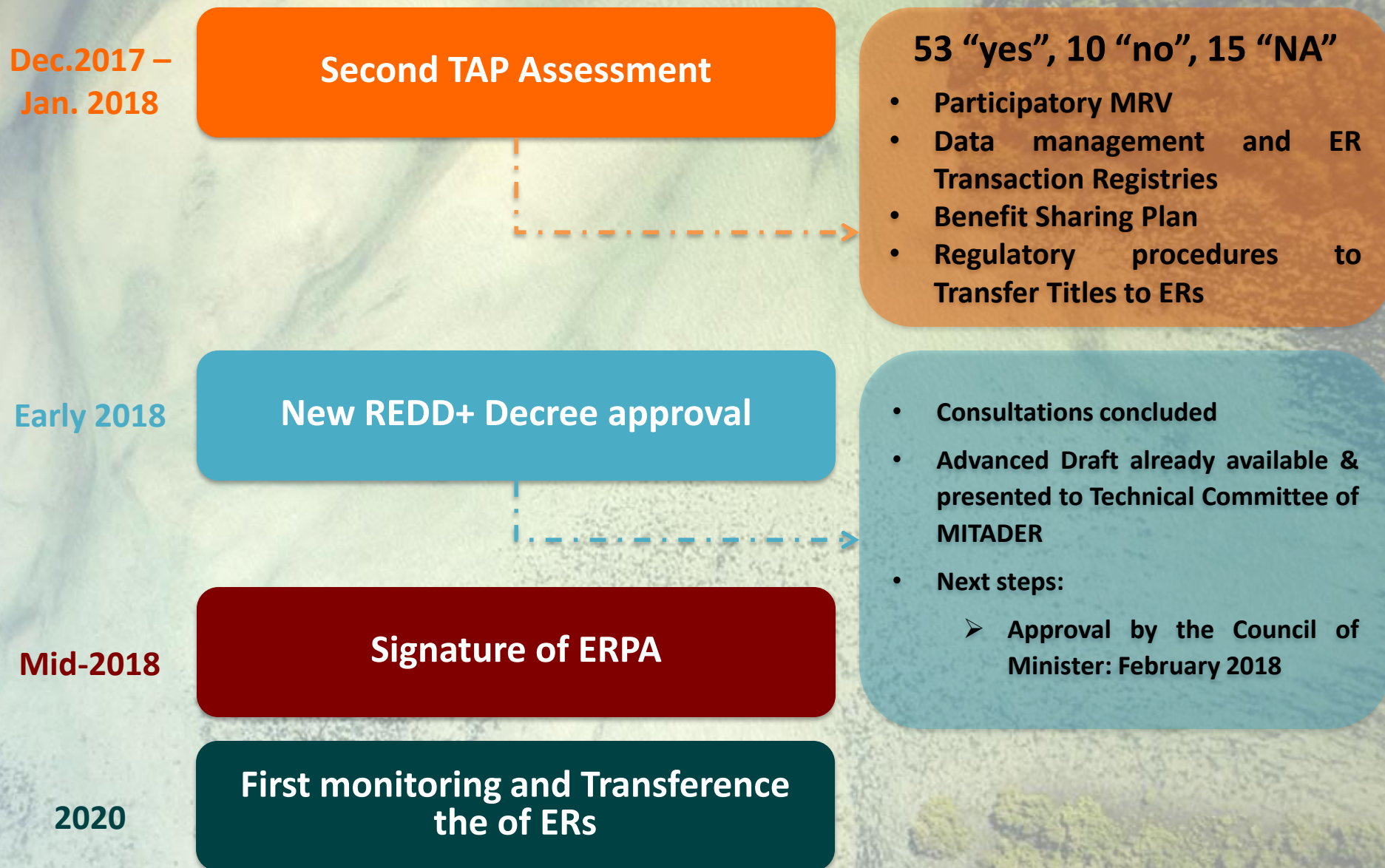


Forest Carbon Partnership Facility

17th Carbon Fund Meeting (CF17)

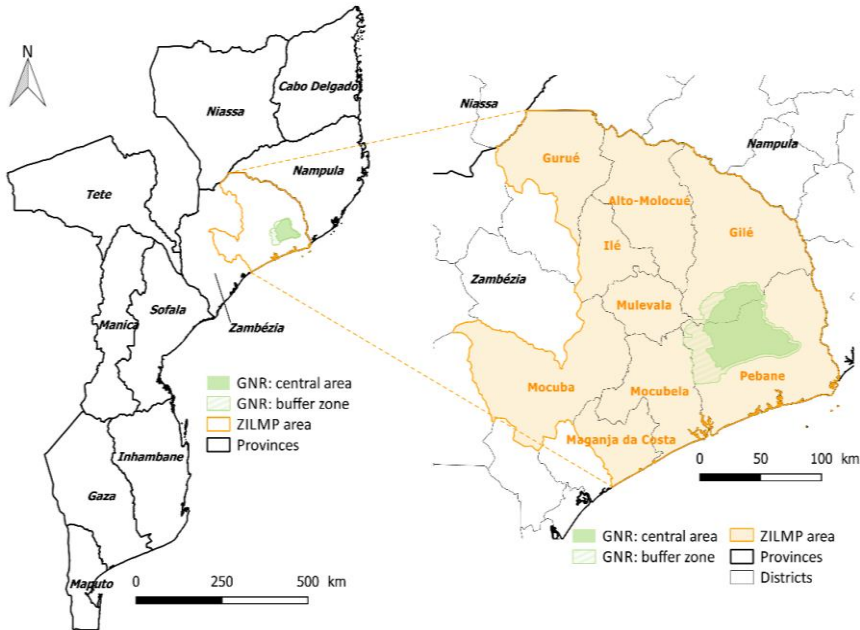
January 30th – February 1st, 2018 in Paris

General overview

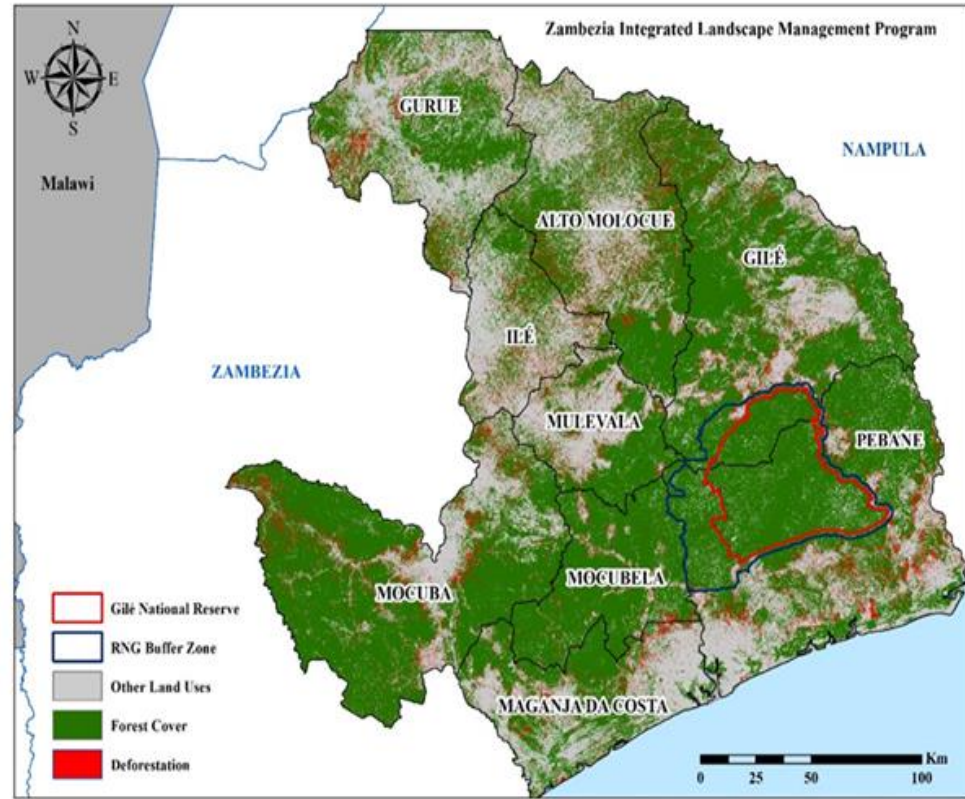


ER Program area selection (1/2)

- Increase from 5 (ER-PIN) to 9 districts
- Area with highest deforestation in Zambézia > national rate
- ER-P – 35.000 ha/yr – 1,12%
- Zambezia – 71.000 ha/yr – 1,46%
- Country 295.000 ha/yr – 0.8%
- Ambitious and jurisdictional



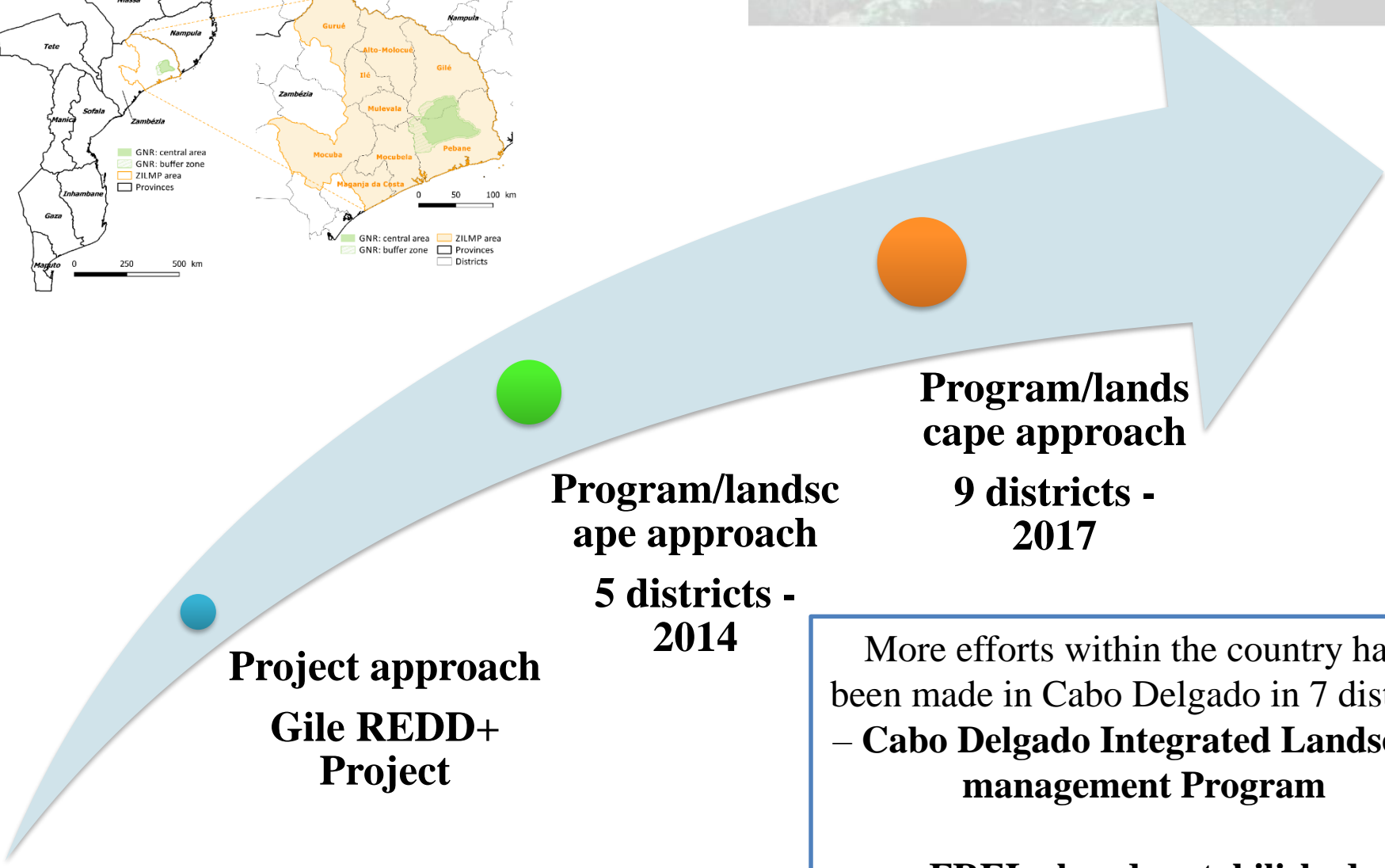
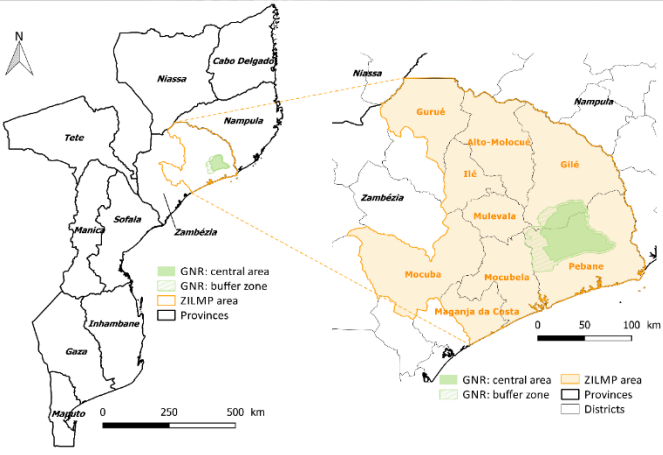
ER Program area (9 districts) in Mozambique



Forest cover in ER Program area & GNR

	Provincia	PRE	Resto Provincia
Floresta (ha)	4,522,935.6	2,963,820.4	1,612,097.9
%		66%	36%

ER-P Scaling up



Project approach
Gile REDD+ Project

**Program/landsc
 ape approach**
5 districts -
2014

**Program/lands
 cape approach**
9 districts -
2017

More efforts within the country have been made in Cabo Delgado in 7 districts – **Cabo Delgado Integrated Landscape management Program**

FREL already established
Investments secured

Other Priority Landscapes

1

Quirimbas – Landscape program at early stages of preparation, multi-stakeholder forum established

2

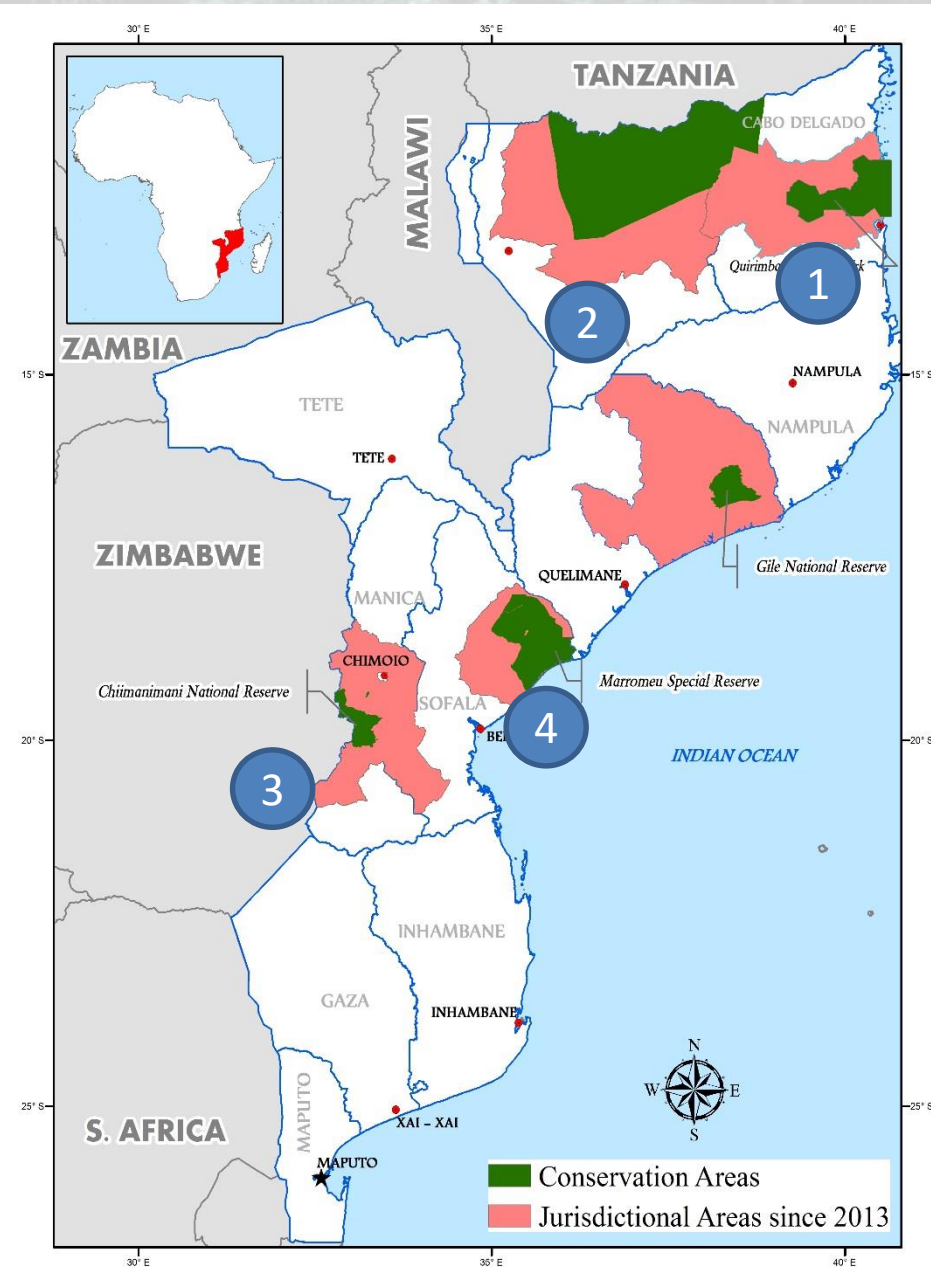
Niassa – Ongoing discussions with the reforestation private sector, multi-stakeholder platform established

3

Chimanimani – conservation agriculture around the reserve, restoration opportunities assessment methodology (ROAM)

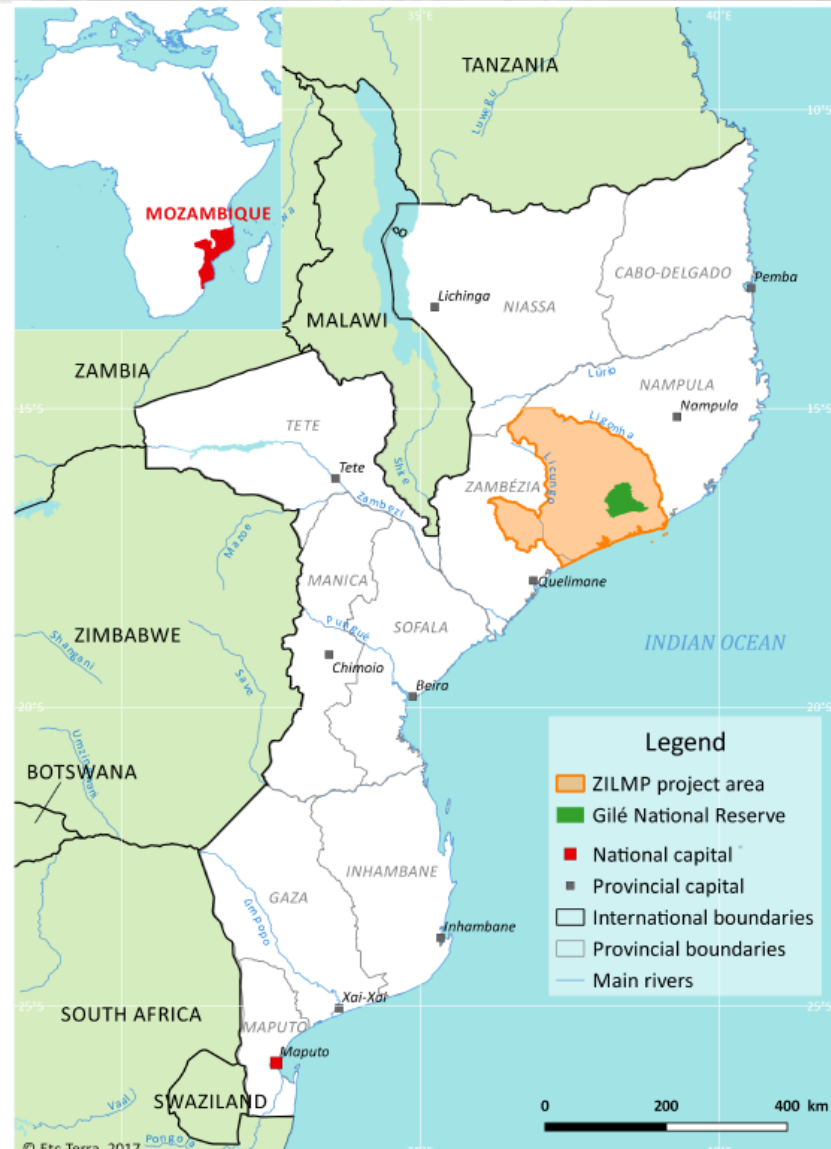
4

Marromeu – Agroforestry Systems around the Marromeu complex (game farmers and conservation area)



ER Program area selection (2/2)

- New REDD+ Decree: districts is the **elementary unit of REDD+ programs**, coherent with UT-REDD+ monitoring capacity
- Future **scale-up** through districts to fit with the broader climate change agenda in Mozambique
- **1st pilot & performance-based payment operation** in the country covering 9 districts
 - **Secured investment financing** to efficiently reduce deforestation and forest degradation
 - **Local capacity** being strengthened: local government, Community, and private sector (more funding necessary to expand beyond);
 - Still allows good implementation and supervision of activities and **safeguards**;



Land-based investments in the 9 districts

Estimation or areas that will benefit from land-based investments

<i>In hectares (ha)</i>	MozFIP	MozBio	Sustenta	TOTAL
Land area under sustainable landscape management - outside of conservation areas (ha)	30,250		5,800	36,050
Conservation areas under improved management in the landscapes – GNR (ha)		436,383		436,383
Restoration of natural habitats through Assisted Natural Regeneration (ANR) and enrichment planting (ha)	500	200	800	1,500
Conservation agriculture, incl. Agro forestry (ha)	750	500	5000	7,050
Area of planted forests established (ha)	3,000			3,000
Area under forest management for sustainable charcoal production (ha)	1,000			1,000
Area of forest concessions under sustainable forest management (ha)	25,000			25,000
Land area supported by community land-use plans (ha)	120,000		202,500	322,500

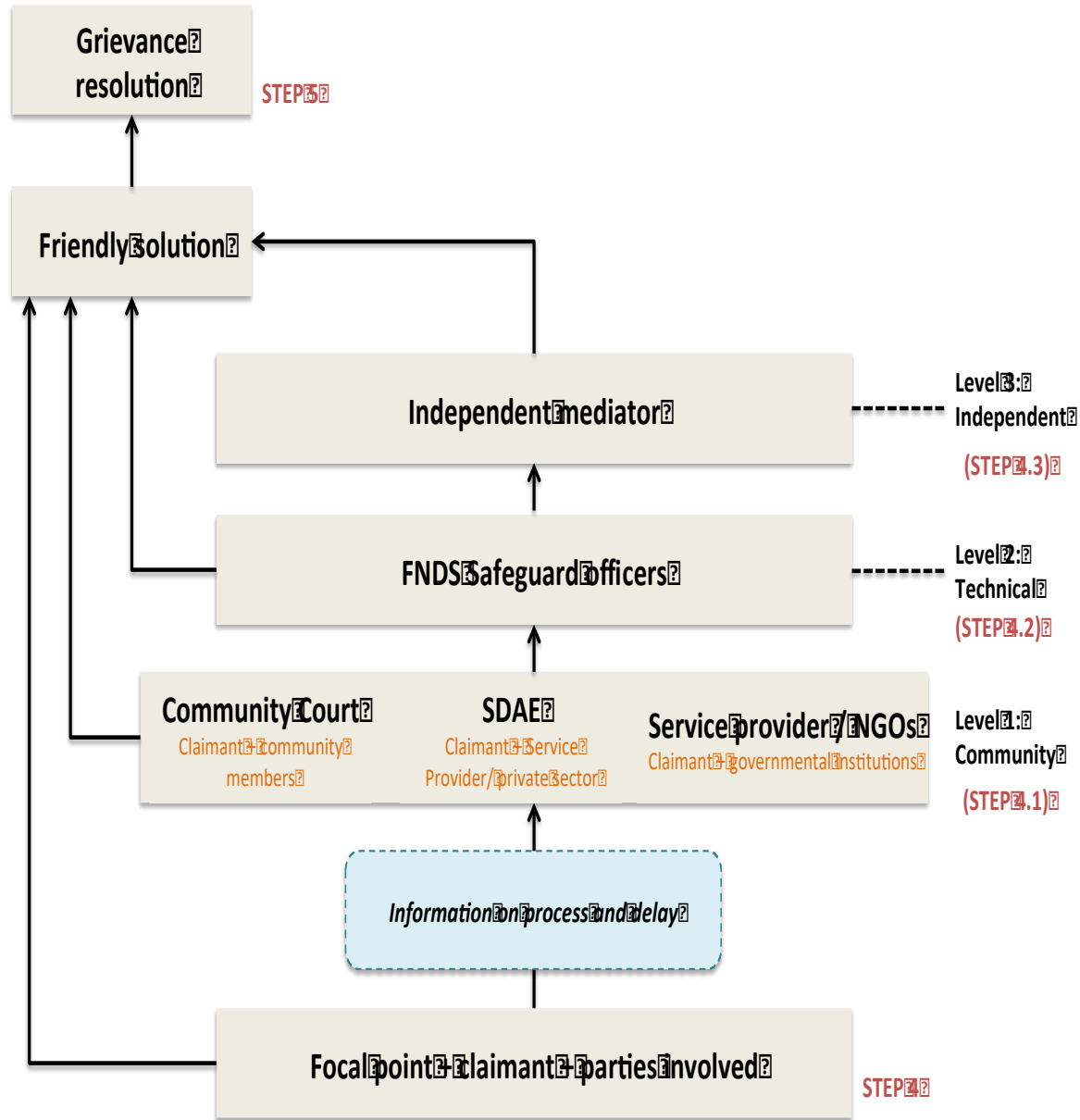
The data in this table is only for information purposes and were taken from the results framework of the pads of the projects. The total area of project initiatives should not be estimated by adding up the values in this table.

Steps and procedures

1. Gathering of suggestions & complaints (green line, emails, forms, meetings, etc.)
2. Registration & categorization of complaints (focal points)
3. Confirmation
4. Verification investigation, action (3 levels of resolution)
5. Implementation of agreed resolution
6. Monitoring

Communication

Web platform, community radios, videos, community meetings, Zambia forum, etc.



Levels of resolution within step 4 of the FGRM

Participatory MRV and next steps

Achieved:

- Design of PMRV system coordinated by UT REDD+ with support from PIU
- Communities involved in SIS and Dialogue and Redress Mechanism
- SIS : (i) final list of indicators; (ii) Identification of focal points in directorates
- Dialogue & Redress Mechanism: (i) assessment of existing mechanisms; (ii) Procedures, monitoring and communication

Missing:

- Registration on REDD+ MRV web portal: *On-going*
- Not yet operational (still at the planning stage)

Next steps: tested as a pilot in 2018, in 15 districts of the provinces of Zambézia and Cabo Delgado

Timeline for PMRV design and implementation

Tasks		2016	2017	2018	2019	2020	2021	2022
Participatory MRV	Concept project							
	Detailed project design							
	Implementation							
	Reporting							

Registries

REDD+ Program and Projects Data Management System

Achieved:

- Decision to maintain own national system;
- Initial Design of the Database described in R-Package;
- General functioning with with the UT REDD+ being responsible for managing it and communicating to MITADER all information related to ERs generated by REDD+ projects;

Missing:

- Document formally establishing clear administrative procedures;
- Database platform.

ER Transactions Registry

Achieved:

- Decision to use 3rd party Registry: FCPF Registry (for now);
- Initial design of the Registry described in new REDD+ Decree;
- General functioning with MITADER responsible for issuing the ER Titles, managing transfer to buyers and subsequent ER payments ; FNDS responsible for channeling them to beneficiaries ;

Missing:

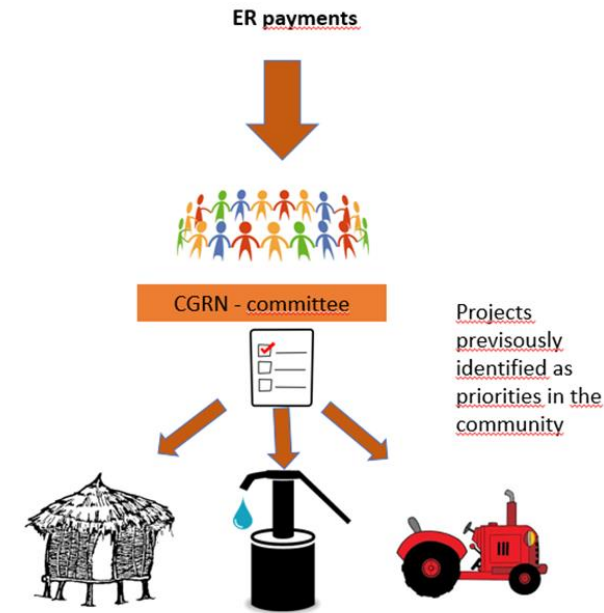
- Document formally establishing clear administrative procedures;
- Registry platform.

Achieved:

- Creation of a BSP working group;
- First draft of BSP with list of options and proposals currently discussed;
- List of preliminary decisions available (see ZILMP presentation).

Missing:

- Advanced draft of BSP: 2018 (before ER-PA);
- Consultation with civil society and local stakeholders (ongoing);
- Adoption of final BSP.



GoM's Ability to transfer Ers and next steps

Achieved:

- Exhaustive assessment of implications of land & resource regime assessment with definition of carbon and titles to Ers ownership;
- Designation of MITADER as the entity in charge of signing ER-PA and managing ERs;
- New REDD+ Decree draft: establishing State ownership on all ER generated in the country and MITADER's authority to transfer ER titles

Missing:

- Approval of REDD+ Decree to formalize MITADER's authority;
- Signature of ER-PA.

Thank you.

Contact: Momade Nemané
(momadenemane@gmail.com)

<http://www.redd.org.mz/>

